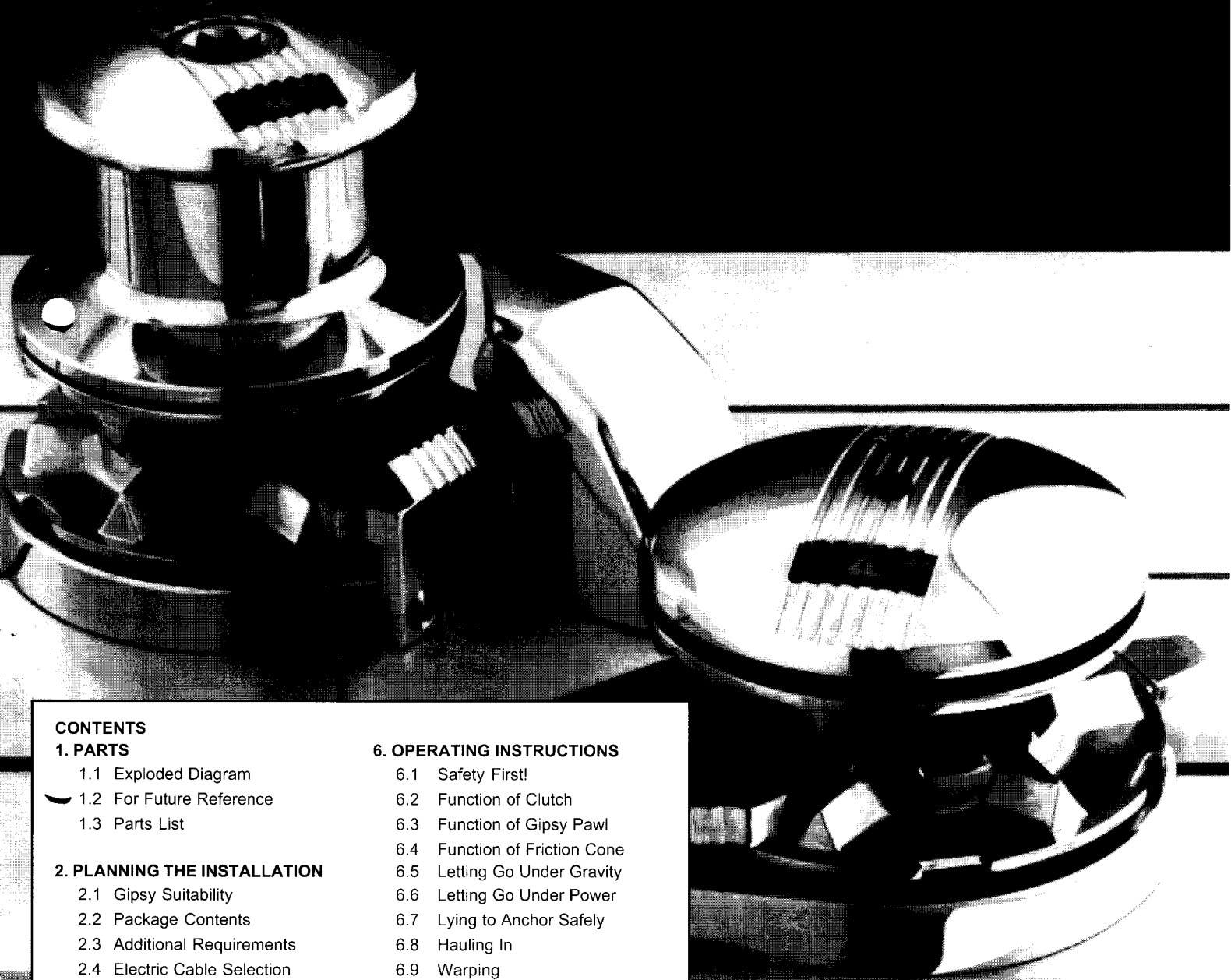


Anchorman Power 1000

Installation, Operation and Maintenance Instructions



CONTENTS

1. PARTS

- 1.1 Exploded Diagram
- 1.2 For Future Reference
- 1.3 Parts List

2. PLANNING THE INSTALLATION

- 2.1 Gipsy Suitability
- 2.2 Package Contents
- 2.3 Additional Requirements
- 2.4 Electric Cable Selection

3. ACCESSORIES

4. SPECIFICATION

- 4.1 Performance
- 4.2 Materials

5. INSTALLATION

- 5.1 Fitting Windlass to Deck
- 5.2 Wiring
- 5.3 Joining Rope to Chain

6. OPERATING INSTRUCTIONS

- 6.1 Safety First!
- 6.2 Function of Clutch
- 6.3 Function of Gipsy Pawl
- 6.4 Function of Friction Cone
- 6.5 Letting Go Under Gravity
- 6.6 Letting Go Under Power
- 6.7 Lying to Anchor Safely
- 6.8 Hauling In
- 6.9 Warping
- 6.10 Emergency Hand Operation
- 6.11 Operating Tips

7. IMPORTANT USER INFORMATION

8. MAINTENANCE

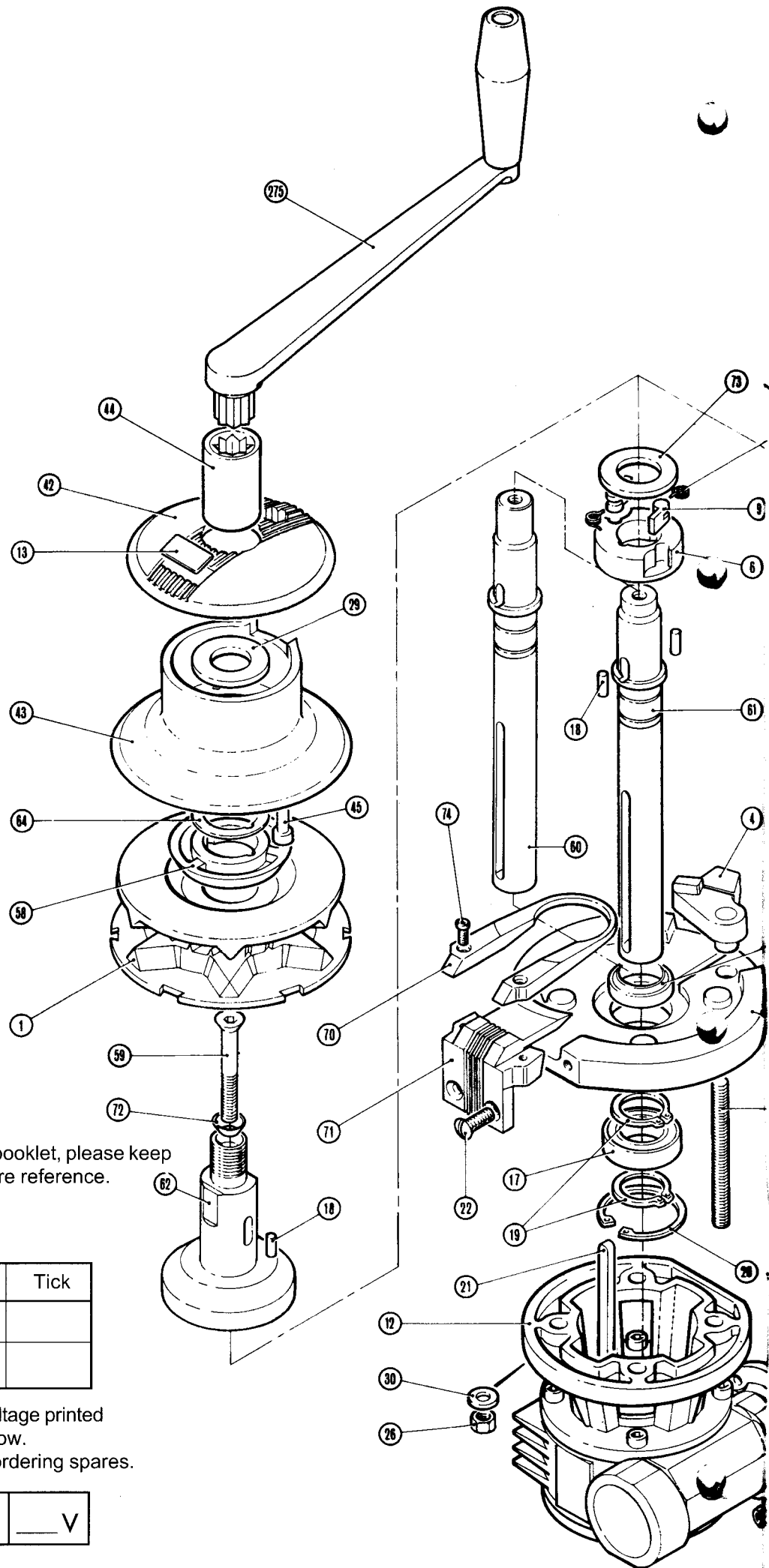
- 8.1 General Recommendations
- 8.2 Dismantling
- 8.3 Winter Laying Up

9. WARRANTY



**SIMPSON
LAWRENCE**

1. PARTS
1.1 Exploded Diagram



1.2 For Future Reference

After you have read this instruction booklet, please keep it safe on board your vessel for future reference.

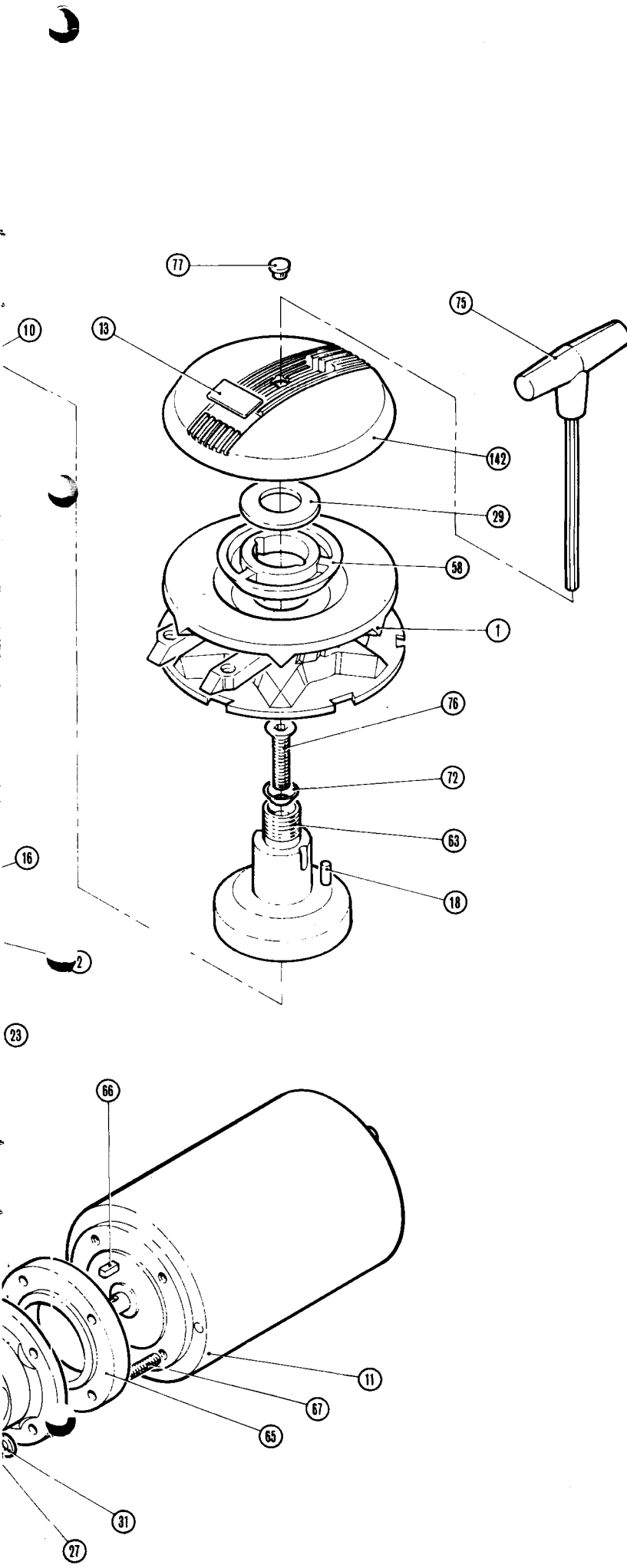
1.2.1 Identify your model

Model	List No.	Tick
Gipsy/Drum	0043900	
Gipsy only	0044000	

1.2.2 Please find the serial number and voltage printed on the gearbox label and note it below.
 This information is essential when ordering spares.

	V
--	---

1.3 PARTS LIST



Part Number	Description	Quantity	
		439	440
1	Gipsy	1	1
2	Baseplate	1	1
4	Gipsy Pawl	1	1
6	Drive Pawl Carrier	1	1
9	Drive Pawl	2	2
10	Pawl Spring	2	2
11	Motor	1	1
12	Gearbox Assembly	1	1
13	Nameplate	1	1
16	Wiper Seal	1	1
17	Sealed Bearing	1	1
18	Drive Roller	4	4
19	External Circlip	2	2
20	Internal Circlip	1	1
21	Key	1	1
22	Screw	2	2
23	Stud	4	4
26	Nut	4	4
27	Nut	4	4
29	Washer	1	1
30	Washer	4	4
31	Washer	4	4
42	Drum Cap	1	0
43	Drum	1	0
44	Clutch Nut	1	0
45	Screw	3	0
58	Clutch Cone	1	1
59	Socket Screw	1	0
60	Mainshaft (Gipsy/Drum)	1	0
61	Mainshaft (Gipsy Only)	0	1
62	Gipsy/Drum Carrier	1	0
63	Gipsy Carrier	0	1
64	Distance Piece	1	0
65	Motor Adaptor Plate	1	1
66	Key	1	1
67	Stud	4	4
70	Fleming	1	1
71	Fleming Stripper	1	1
72	Friction Cone	1	1
73	Washer	1	1
74	Screw	2	2
75	Socket Screw Key	1	1
76	Socket Screw	0	1
77	Plug	0	1
142	Gipsy Cap	0	1
275	Sheet Winch Handle (Not included, see accessories)	1	1

2. PLANNING THE INSTALLATION

2.1 Gipsy Suitability

The rope/chain gipsy enables the windlass to be used for hauling rope and chain without the need to transfer from warping drum to gipsy.

It is ideally suited to anchor rodes which consist of rope with a chain tail.

Rope used with rope/chain gipsies should be three strand nylon.

The RC172 gipsy is designed to suit 12 mm (1/2") rope, the RC162 and RC152 gipsies to suit 16 mm (5/8") rope but they all may accept diameters that are plus or minus 3 mm (1/8") depending on the particular lay of the rope. Because of wide variations in rope type and construction some experimentation may be required. On no account should multiplait ropes be used! The 180 & 181 gipsies handle chain only.

Chain should be chosen to suit gipsies as follows:-

GIPSY	CHAIN	PITCH (mm)	SIZE
RC152	US NACM		5/16"
RC162	S-L 0058004		9.5 mm
	S-L 0058604 Stainless		10 mm
	US BBB	27.7	3/8"
	French NFE 26011		10 mm
	German DIN 766		9&10 mm
	Italian		10 mm
	Norwegian		1/4"
	Australian PWB & Beavers Australian Grade 'L'		8 mm 10 mm
RC172	S-L 0058002		1/4"
	S-L 0058003		8 mm
	S-L 0058603 Stainless		8 mm
	US Transport 'G7' (ISO Spec.)	25.4	1/4"
	US BBB	25.4	5/16"
	US High Test 'G4' (ISO Spec.)	26.2	5/16"
	French NFE 26011		8 mm
	German DIN 766		8 mm
	Italian		8 mm
	Norwegian		1/4" 5/16"
Australian		8 mm 8 mm	
180	Accoloy		9/32"
181	German DIN 766(86)		6 mm

Depending on manufacture, other chains in the range from 6mm to 10mm and 1/4" to 3/8" may be suitable with one of the above gipsies. Should you have difficulty in matching a gipsy to your chain please consult your local agent or Simpson-Lawrence Ltd.

2.2 Package Contents

Windlass Above Deck Assembly

Motor & Gearbox Unit

Mounting Studs, Washers & Nuts

Socket Screw Key

Safety Instructions D1000-6

Instruction Manual D1011-6

Mounting Template D1018-2

2.3 Additional Requirements

Each windlass installation requires :

- A standard sheet winch handle.
- A solenoid for a single direction installation, or a boxed pair of solenoids for a reversing installation. (Unless the High Load Foot switch only is used)
- A control switch (or switches) by preference.
- A Breaker/Isolator for overload protection which can also be used as a main isolating switch. (We recommend the ones listed under '3. Accessories')
- The following tools:

Flat Bladed Screwdriver
9.5mm (3/8") Diameter Drill
Jig Saw or Trepanning Tool
13mm AF Spanner (wrench)
Crimping Pliers / Wire Stripper

c. Sealant

g. Suitable electrical cable and crimp terminals.

2.4 Electric Cable Selection

To achieve the best performance and safeguard your electrical system it is essential that any electric windlass is fitted with sufficiently large diameter cable to cope with the current draw imposed upon it and to keep the voltage drop within acceptable limits. In any circumstance voltage drop due entirely to cable resistance should not exceed 5%, roughly 0.5V for a 12V installation and 1.0V for a 24V one. The following tables give recommended cable sizes. The recommendations are based on the total length of cable required, from the battery to the windlass and back to the battery, following the route of the cables. (See the Wiring diagram for the definition)
DO NOT confuse Cable Length with the length of the vessel!

METRIC OR STARTER CABLE

VOLTAGE	Cable Length		Size mm ²
	m	ft.	
12	9.2	30	20
	12.8	42	25
	17.7	58	35
	19.7	64	40
	24.0	79	50
24	23.3	76	15
	25.3	83	16
	28.9	95	20
	40.1	131	25

